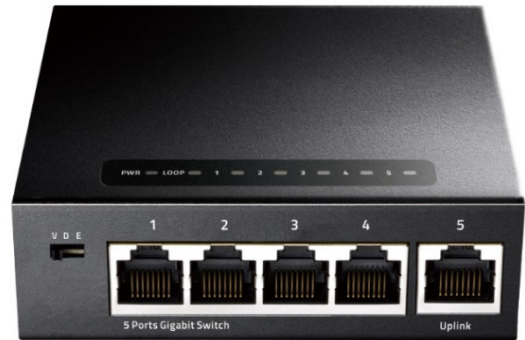


Cudy GS105 metalni Cudy GS105D 5-Port Gbit  
Desktop Switch, 5x RJ45 10/100/1000 (Alt. G1005)

Šifra: 53124  
Kategorija proizvoda: Switch uređaji  
Proizvođač: CUDY

Cena: **1.721,00** rsd.



- Complies with IEEE 802.3, IEEE 802.3u, IEEE802.3x and IEEE 802.3ab standards
- 5 10/100/1000Mbps Auto-Negotiation, Auto-MDI/MDIX ports provide smart switching between 10Mbps, 100Mbps and 1000Mbps hardware
- Non-blocking switching architecture enables full wire-speed packets forwarding and filtering
- Store-and-Forward switching method
- Supports 16K MAC address auto-learning and auto-agin

Standard configurati: 5 10/100/1000M RJ-45 adaptive ports

Switching Capacity: 10Gbps

Throughput: 7.44Mpps

Packet Buffer: 1M

MAC Address: 1K

Jumbo Frame: 2K

Transfer Mode: Store and forward

MTBF: 100000 hour

Network protocol:

IEEE802.3 (10Base-T)

IEEE802.3u (100Base-TX)

IEEE802.3ab (1000Base-TX)

IEEE802.3x (Flow control)

Industry Standard

EMI: FCC Part 15 CISPR (EN55032) class A

EMS: EN61000-4-2 (ESD)?EN61000-4-4 (EFT)

Shock: IEC 60068-2-27

Free Fall: IEC 60068-2-32

Vibration: IEC 60068-2-6

Network Medium

10Base-T : Cat3,4,5 or above UTP(=100m)

100Base-TX : Cat5 or above UTP(=100m)

1000Base-TX : Cat5 or aboveUTP(=100m)

Working Temperature:-10~50°C

Storage Temperature:-40~70°C

Working Humidity :10%~90%,non-condensing

Storage Temperature:5%~90%,non-condensing

Working Height:Maximum10,000 feet

Storage heigh:Maximum 10,000 feet

LED Indicators PWR(Power indicator)?Link(Network Link)?LOOP(Loop alarm)

DIP Switch

VLAN:Port Isolation, 1-4 ports are isolated each other, all communicate with uplink port 5;

Default:Default mode, Support loop alarm;

Extend:Monitor Mode, 1-4 ports support 100M speed reduction negotiation, support 250 meters in 10Mbps/s mode, port 7 and port 8 as uplink port

Product Size:100\*70\*26mm

Package Size:175\*120\*63mm

Product Net-Weight:0.2kg

Product Gross-Weight:0.4kg